

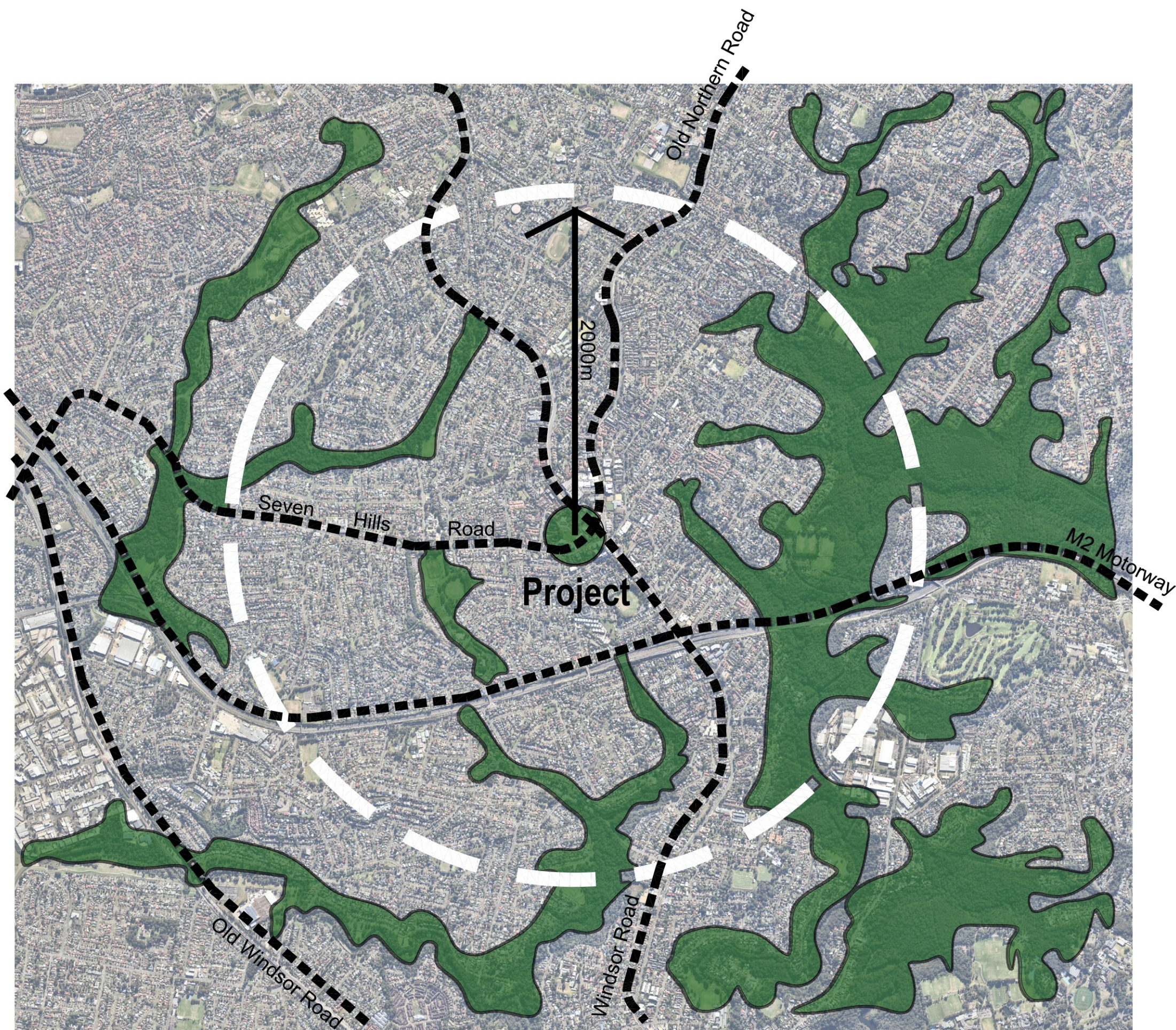
10-16 SEVEN HILLS ROAD, BAULKHAM HILLS

Landscape Architecture Concept Proposal

Design Principles

- 01 Re-generate the patterns of Country
- 02 Improve ecological values of the place
- 03 Foster Inter-generational living opportunities

Project Context

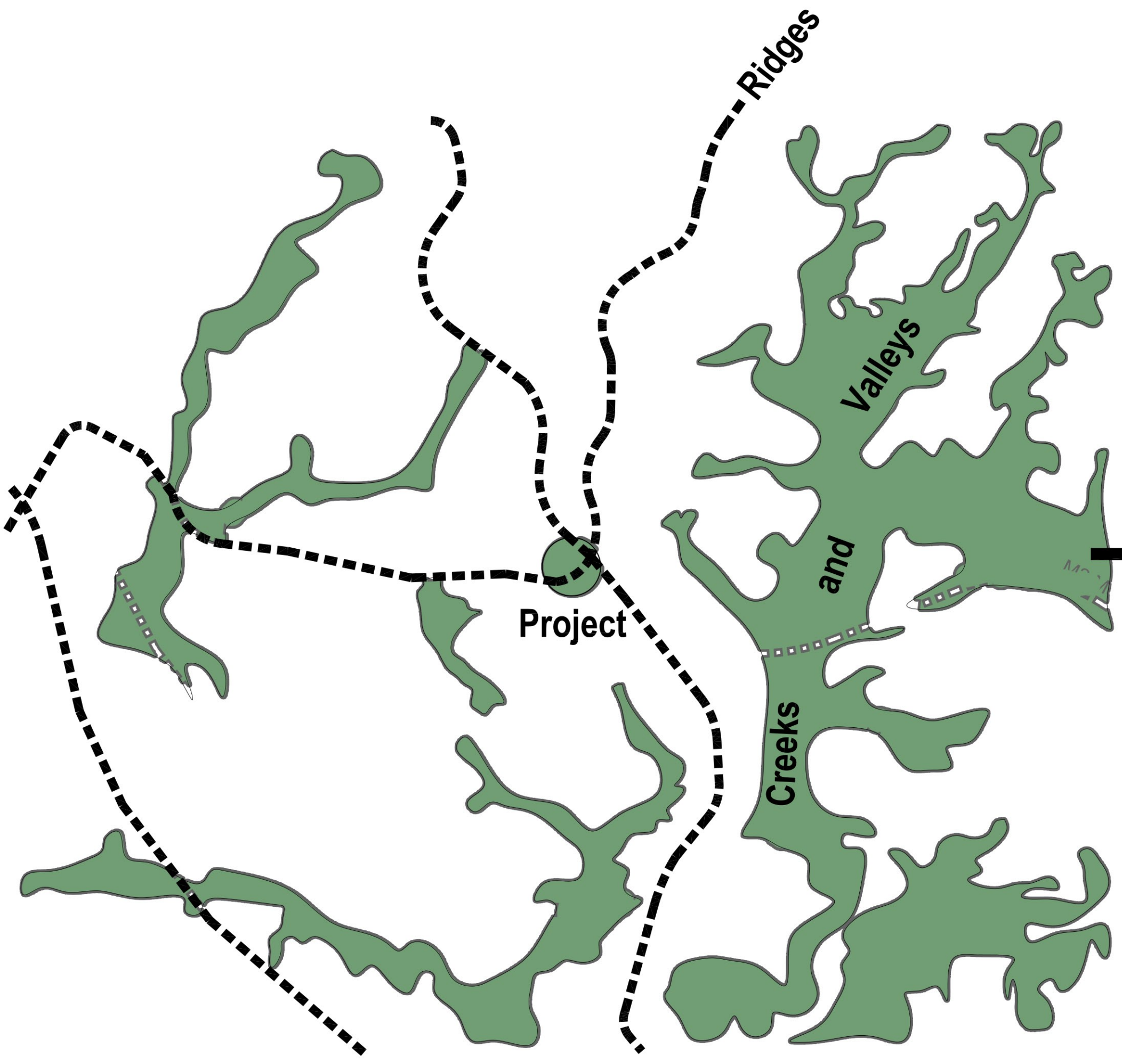


DESIGN PRINCIPLES

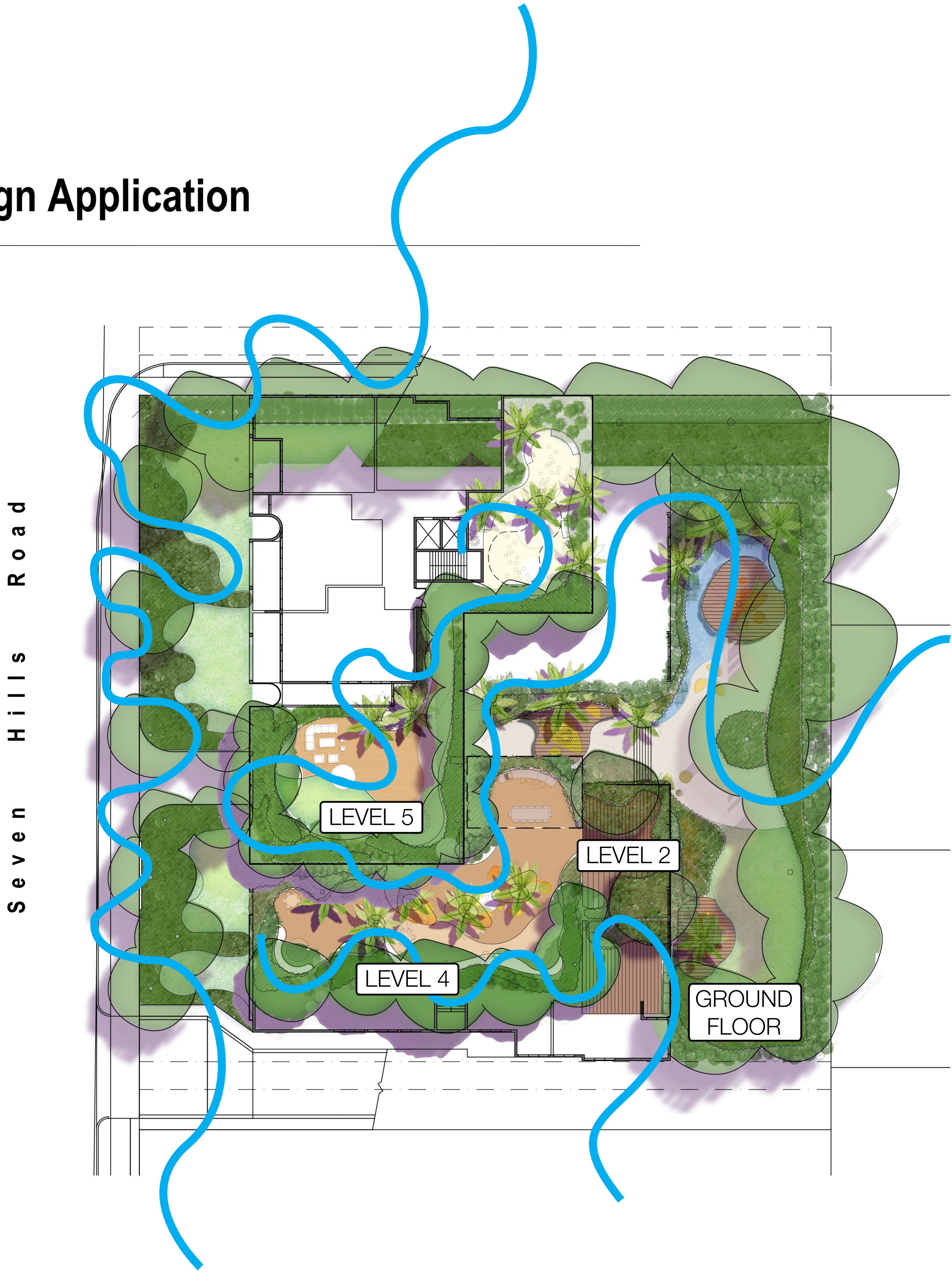
project: 21-085s 10-16 SEVEN HILLS RD, BAULKHAM HILLS
client: FAL GROUP
date: 25.11.2022
revision: C
drawn: OTJ
checked: AL

TaylorBrammer
TAYLOR BRAMMER LANDSCAPE ARCHITECTS PTY LTD
SYDNEY STUDIO
218 Oxford Street Woolahra, NSW, 2025 E sydney@taylorbrammer.com.au T 61 2 9387 8855
Copyright of Taylor Brammer Landscape Architects Pty Ltd. AEN 61 008 724 988

Natural Patterns



Design Application



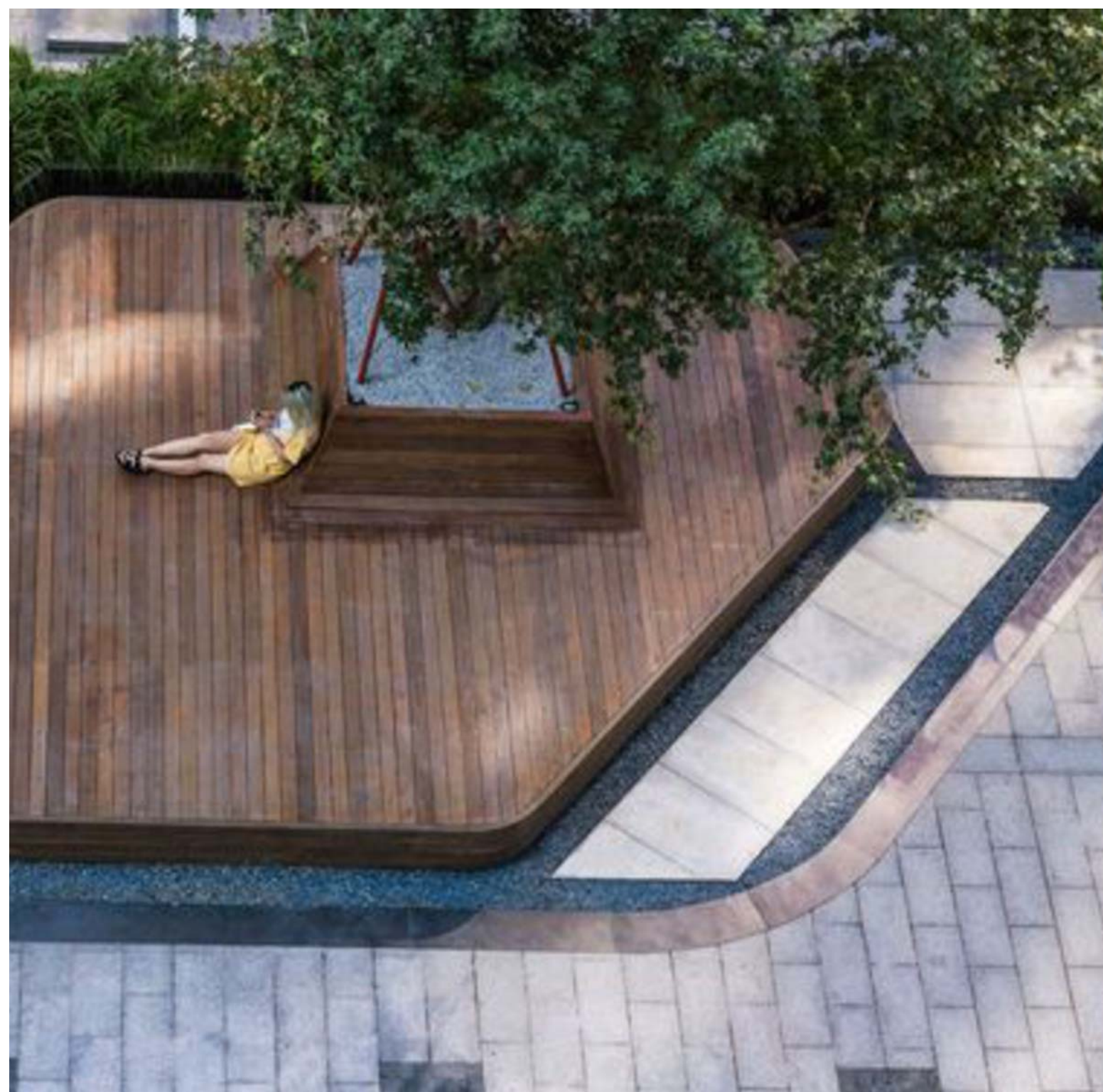
DESIGN APPLICATION



Regenerate and connect with existing ecosystems



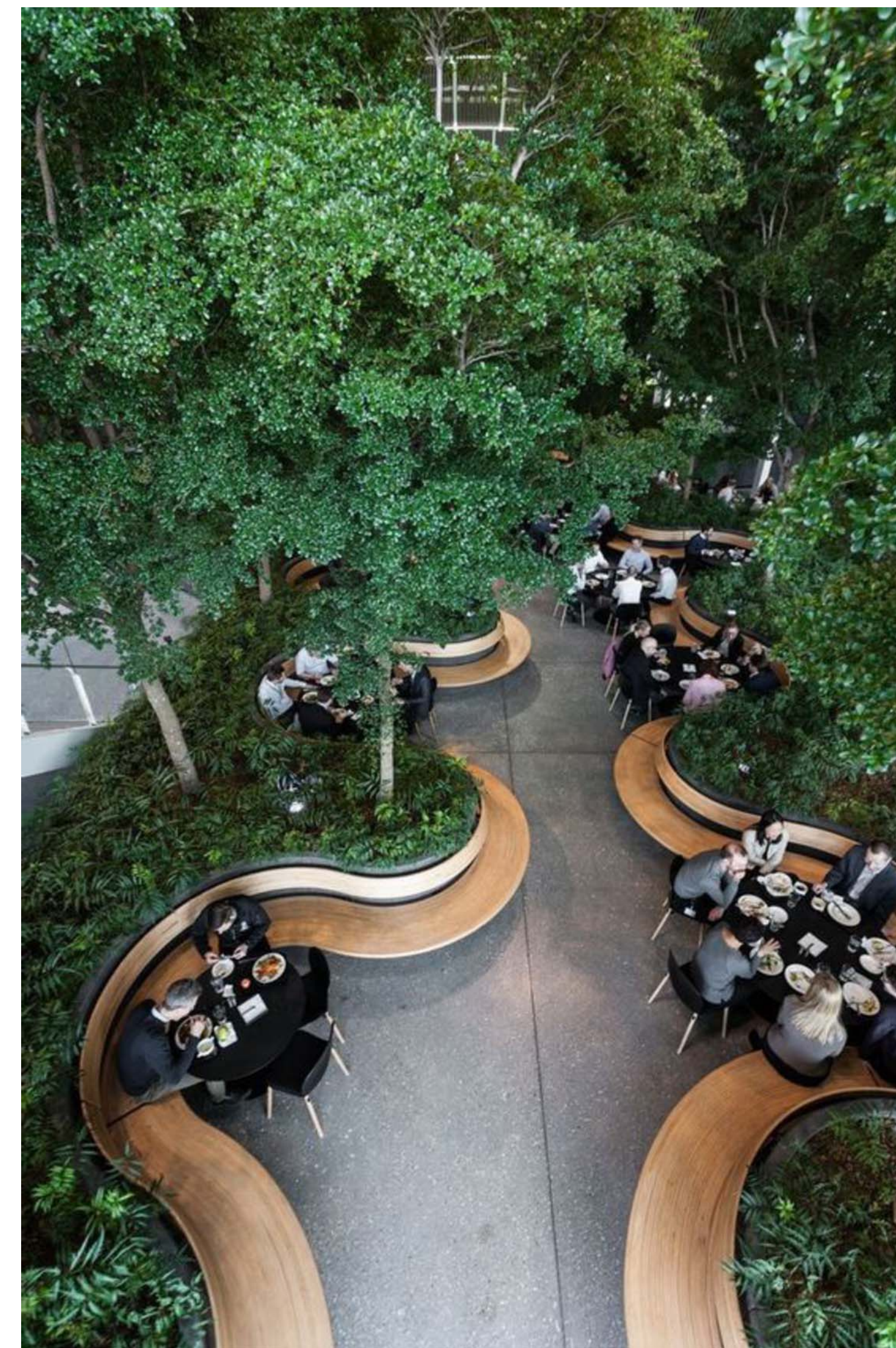
Integration of naturally occurring planting and bush foods



Use of low carbon naturally sourced materials



Provide a range of external environment for modern living



Reinterpretation of surrounding landscape typology into place



Activation of rooftop spaces for children's play



Artist impression of design

Design Principles

- 01 Re-generate the patterns of Country
- 02 Improve ecological values of the place
- 03 Foster Inter-generational living opportunities

PRECEDENTS

project: 21-085s 10-16 SEVEN HILLS RD, BAULKHAM HILLS
client: FAL GROUP
date: 05.12.2022
revision: D
drawn: OTJ
checked: AL

TaylorBrammer
 TAYLOR BRAMMER LANDSCAPE ARCHITECTS PTY LTD
 SYDNEY STUDIO
 218 Oxford Street Woolahra, NSW, 2025 E sydney@taylorbrammer.com.au T 61 2 9387 8855
 Copyright of Taylor Brammer Landscape Architects Pty Ltd. ABN 61 088 724 988

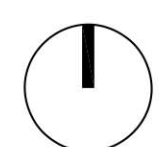


Design Notes

- 01 Feature tree planting to building entries
- 02 Central feature planters with integrated seating and feature palms
- 03 Water feature
- 04 Shade tolerant planting
- 05 Lawn area enclosed by tree planting



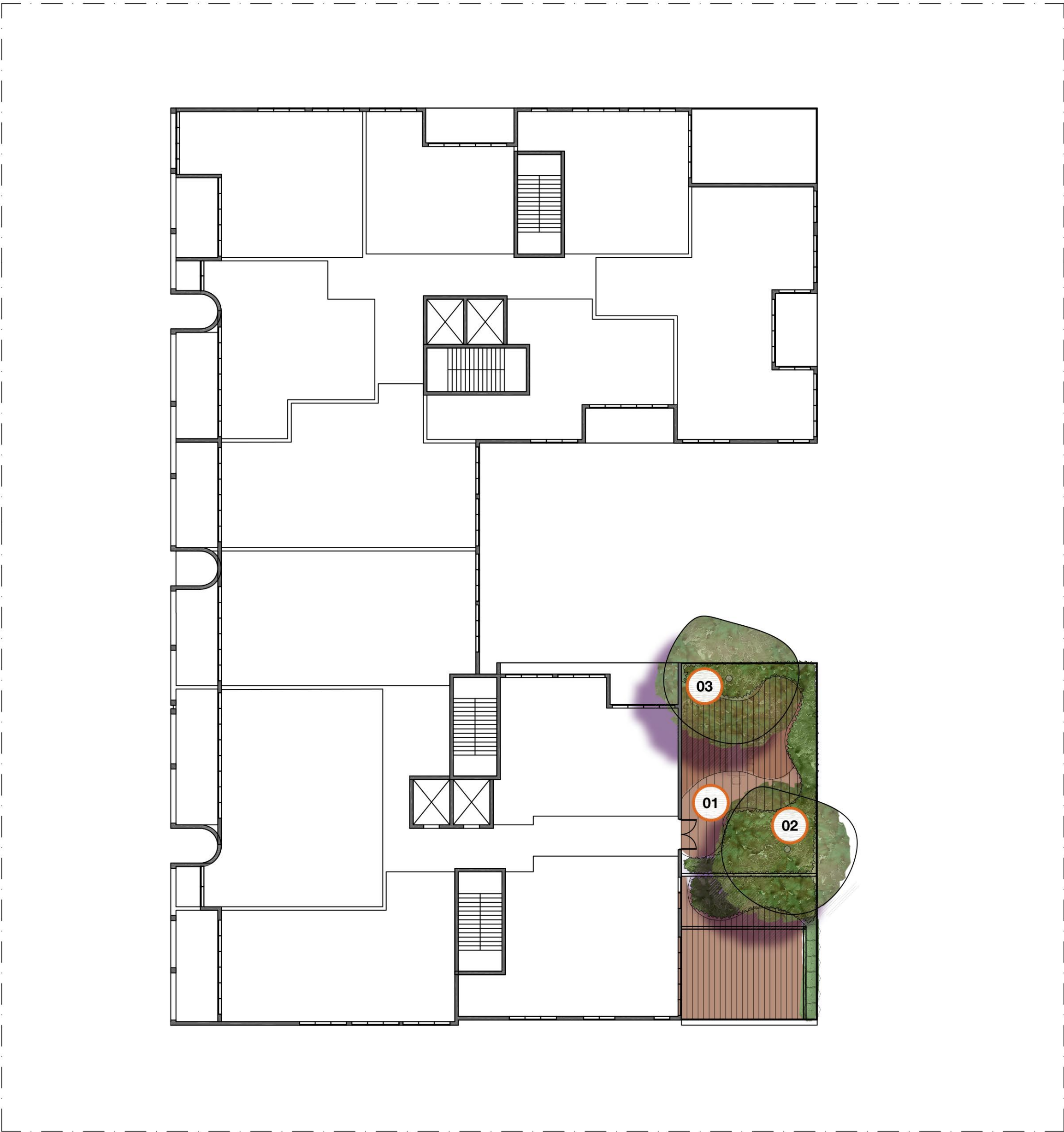
GROUND FLOOR



SCALE 1:200 @ A1
0 2 4 6 8 10m

project: 21-085s 10-16 SEVEN HILLS RD, BAULKHAM HILLS
client: FAL GROUP
date: 05.12.2022
revision: D
drawn: OTJ
checked: AL

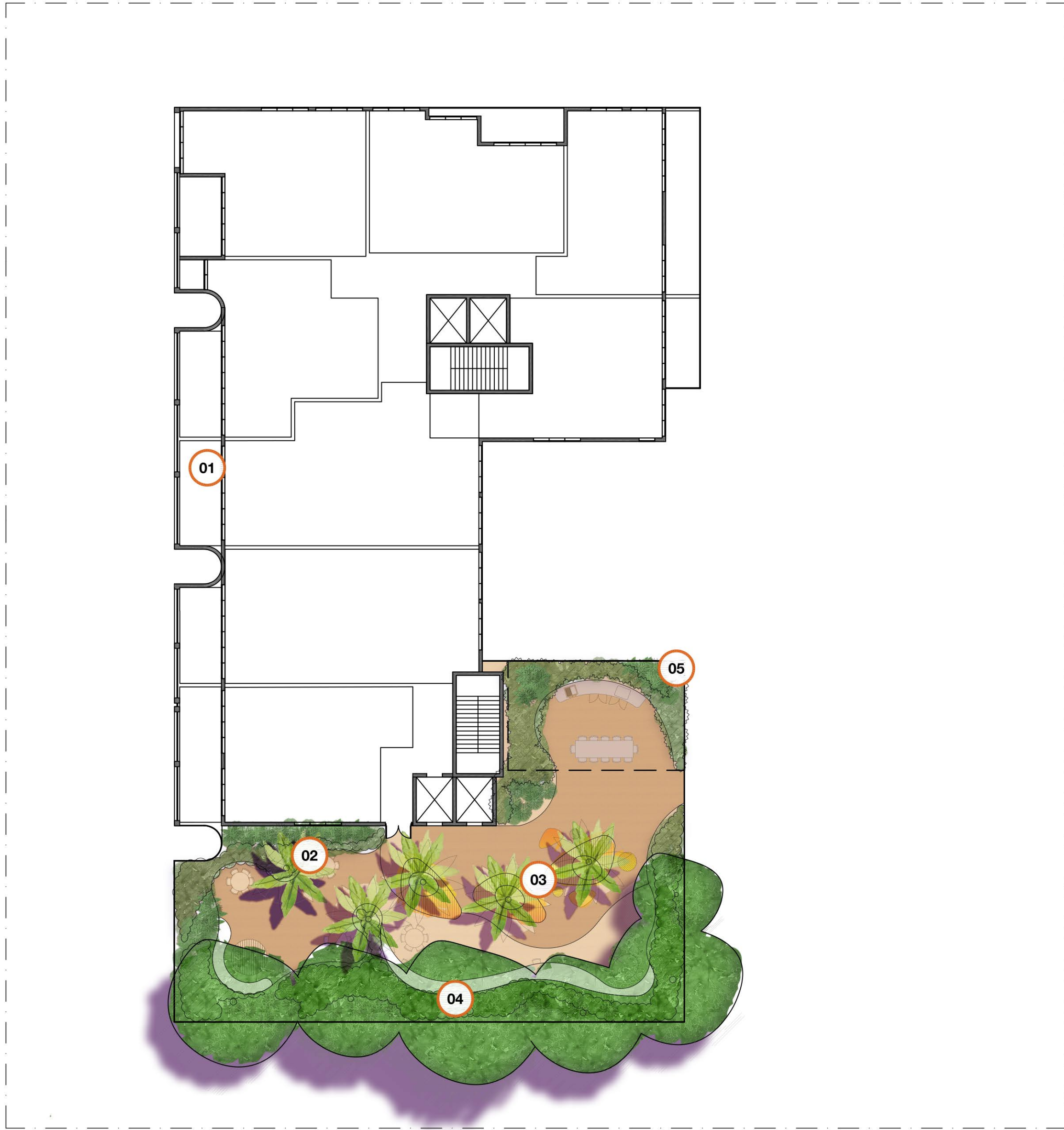
TaylorBrammer
TAYLOR BRAMMER LANDSCAPE ARCHITECTS PTY LTD
SYDNEY STUDIO
218 Oxford Street Woolahra, NSW, 2025 E sydney@taylorbrammer.com.au T 61 2 9387 8855
Copyright of Taylor Brammer Landscape Architects Pty Ltd. ABN 61 098 724 988



Design Notes

- 01 Open pavement to private terraces
- 02 Feature planting in raised planters (as per ADG depths)
- 03 Feature trees in corners

LEVEL 02

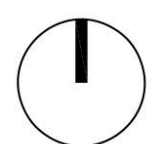


Design Notes

- 01 Open pavement to private terraces
- 02 Feature planting in raised planters (as per ADG depths)
- 03 Feature tree in raised planters to edges
- 04 Inbuilt seating and table nooks for Work From Home and outdoor passive recreation
- 05 Shaded BBQ and outdoor kitchen area with pergola ove

LEVEL 04

05

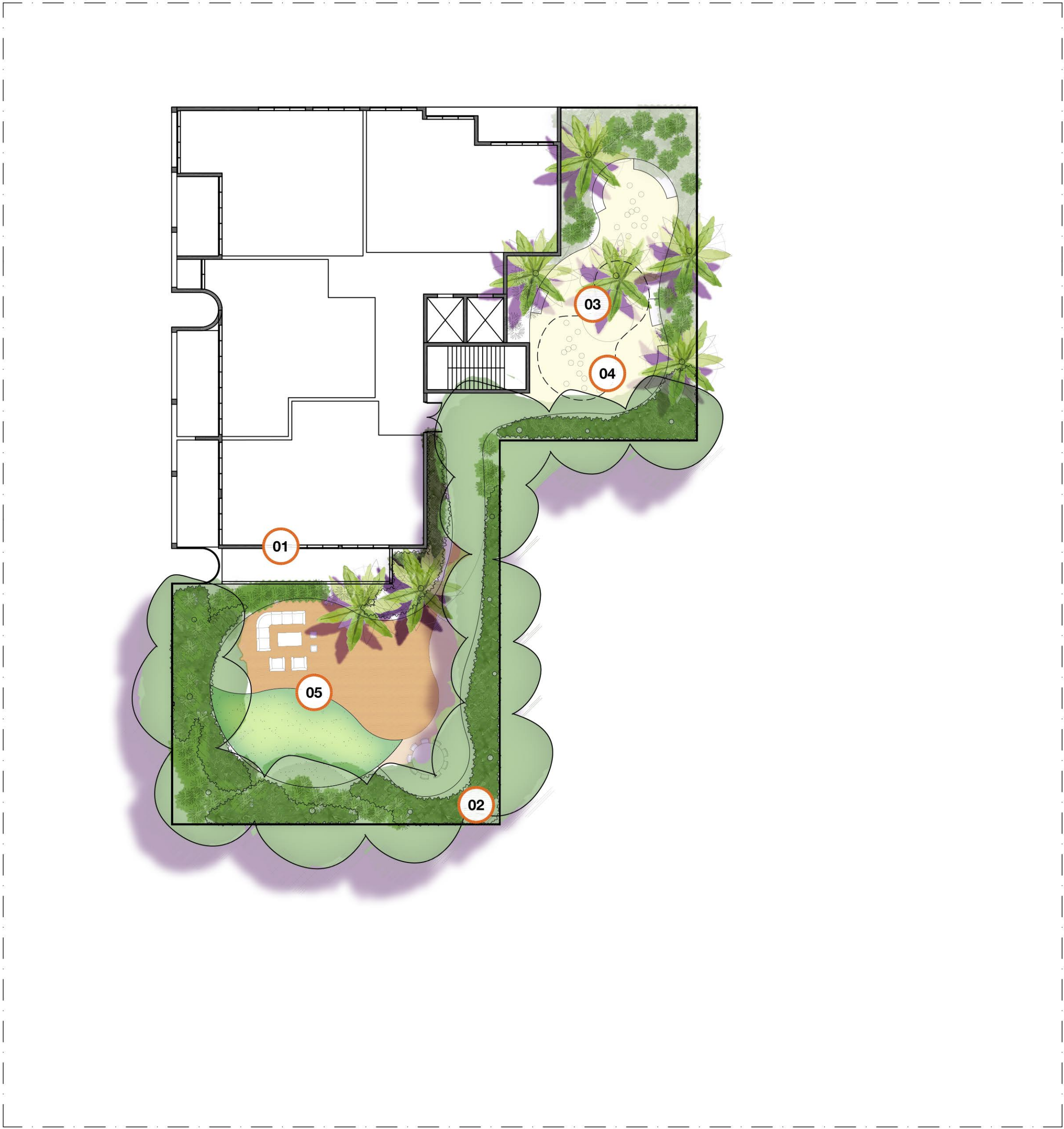


SCALE 1:200 @ A1
0 2 4 6 8 10m

project: 21-085s 10-16 SEVEN HILLS RD, BAULKHAM HILLS
client: FAL GROUP
date: 25.11.2022
revision: A
drawn: OTJ
checked: AL

TaylorBrammer
TAYLOR BRAMMER LANDSCAPE ARCHITECTS PTY LTD
SYDNEY STUDIO
218 Oxford Street Woolahra, NSW, 2025 E sydney@taylorbrammer.com.au T 61 2 9387 8855
Copyright of Taylor Brammer Landscape Architects Pty Ltd. ABN 61 086 724 988

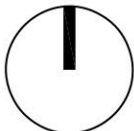
S e v e n H i l l s R o a d



Design Notes

- 01 Open pavement to private terraces
- 02 Feature planting in raised planters (as per ADG depths)
- 03 Feature tree in raised planters to edges
- 04 Shaded childs play area
- 05 Natural lawn with raised vegetable gardens

LEVEL 05



SCALE 1:200 @ A1
0 2 4 6 8 10m

project: 21-085s 10-16 SEVEN HILLS RD, BAULKHAM HILLS
client: FAL GROUP
date: 25.11.2022
revision: A
drawn: OTJ
checked: AL

TaylorBrammer
TAYLOR BRAMMER LANDSCAPE ARCHITECTS PTY LTD
SYDNEY STUDIO
218 Oxford Street Woolahra, NSW, 2025 E sydney@taylorbrammer.com.au T 61 2 9387 8855
Copyright of Taylor Brammer Landscape Architects Pty Ltd. ABN 61 086 724 988